



May Dugan
Center
Est. 1969

Celebrating A HISTORY OF ROCK SOLID SERVICE !

Why the Rock?

A TREE. A BUILDING. A ROCK.

*Today, three things dominate the landscape at the corner of Bridge and Randal. A tree. A building. A rock. For so many they have acted as a beacon to help guide the way. The rock, it seems, has always been here. In 1884 when ground was broken for the former West High School, the large boulder sat where it does today. Neighborhood children thought it had dropped from the heavens. And while the school building changed hands six times, the rock remained. In 1971 when the school building was demolished the rock remained. When construction began on the May Dugan Center in 1974, the rock remained. So many people had passed by the rock that in the late 1980s former students raised funds to engrave the names of the respected schools who once occupied the site. Somewhere along the way, **May Dugan Center** began to identify with the rock. Solid. Stable. Always there, ready to be a beacon guiding the way. One of the highest honors one can have bestowed upon them is the Piece of the Rock award – given to those who have withstood change and remained rock steady in their commitment to the community and mission of May Dugan Center. For this reason, during this season, we remember the rock and as Thomas Jefferson once said, “Endeavor in matters of principle, (to) stand like a rock”.*





Letter from the Executive Director, President Board of Directors

For the past five years, **May Dugan Center** has embarked on a capital campaign to renovate and expand the nearly 50-year-old building. We would like to dedicate this annual report to the many individuals, foundations, corporations, and government entities who have contributed to the campaign.

Capital campaigns have many moving parts and require a dedicated team to tackle the broad set of tasks that are involved in the process. Through the leadership of our Steering Committee, Board of Directors, and Staff, we are grateful to report that we have raised over 90% of our \$7.4 million goal. In 2022, we took ownership of the building from the City and successfully closed on our application for New Market Tax Credits through Cleveland Development Advisors. This enabled us to break ground and begin demolition and construction. We are truly honored to have achieved these important milestones and be within reach of finalizing the campaign.

It is heartwarming to report that we received grant support from nearly 20 local foundations, city, county, and state government, and gifts from over 300 individuals and other community-wide affiliates. This has been a remarkable accomplishment. By early 2024, we will be able to fully enjoy working and managing our core programs in a modernized facility. Not only will our staff, volunteers, and clients benefit from the newly updated building, it will be a major upgrade for Ohio City and the surrounding neighborhoods.

We want to thank our staff members, volunteers, clients, tenants, and neighbors for their understanding and patience during the construction. We have faced many challenges working in tight and limited spaces and adjusting to the working conditions away from our main offices.

Despite the renovation and expansion project, we continued to serve thousands of individuals during 2022 and know that we have made a positive impact on the lives of those we have touched. Without your support, we would not be able to continue our legacy of helping people enrich and advance their lives. We hope you will continue to support our effort.

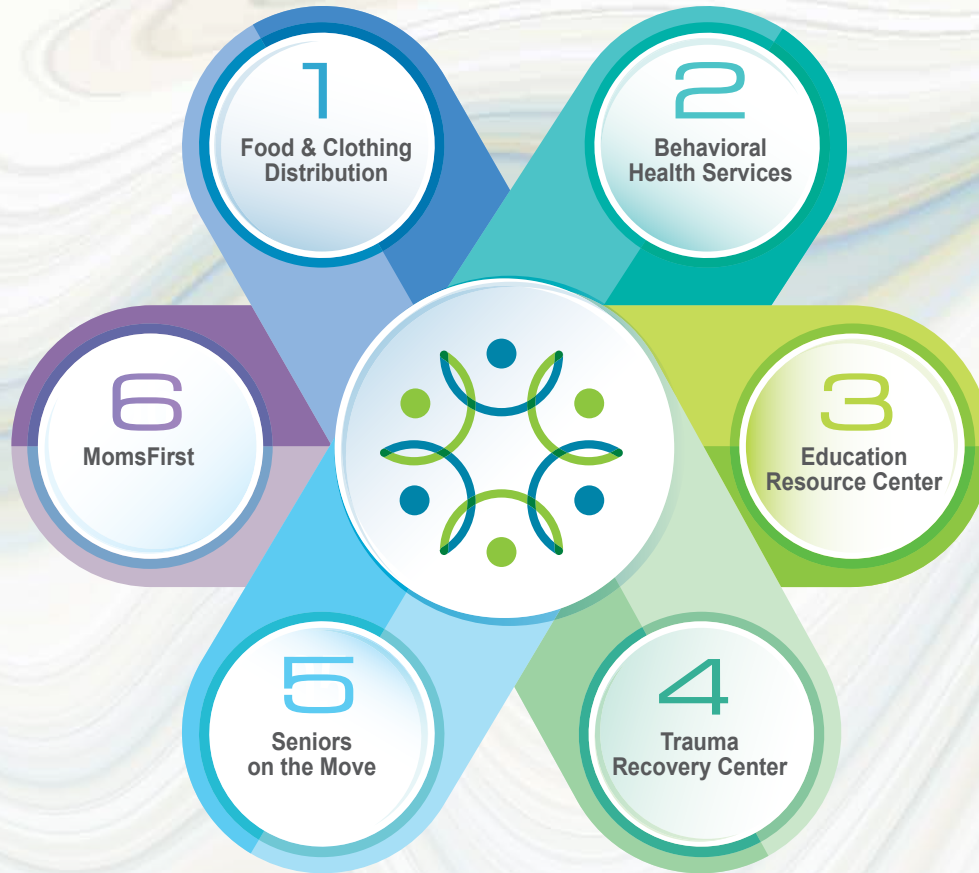
Sincerely,

Rick A. Kemm, MNO
Executive Director



Angela Vannucci
President, Board of Directors





May Dugan Center's



Core Programs

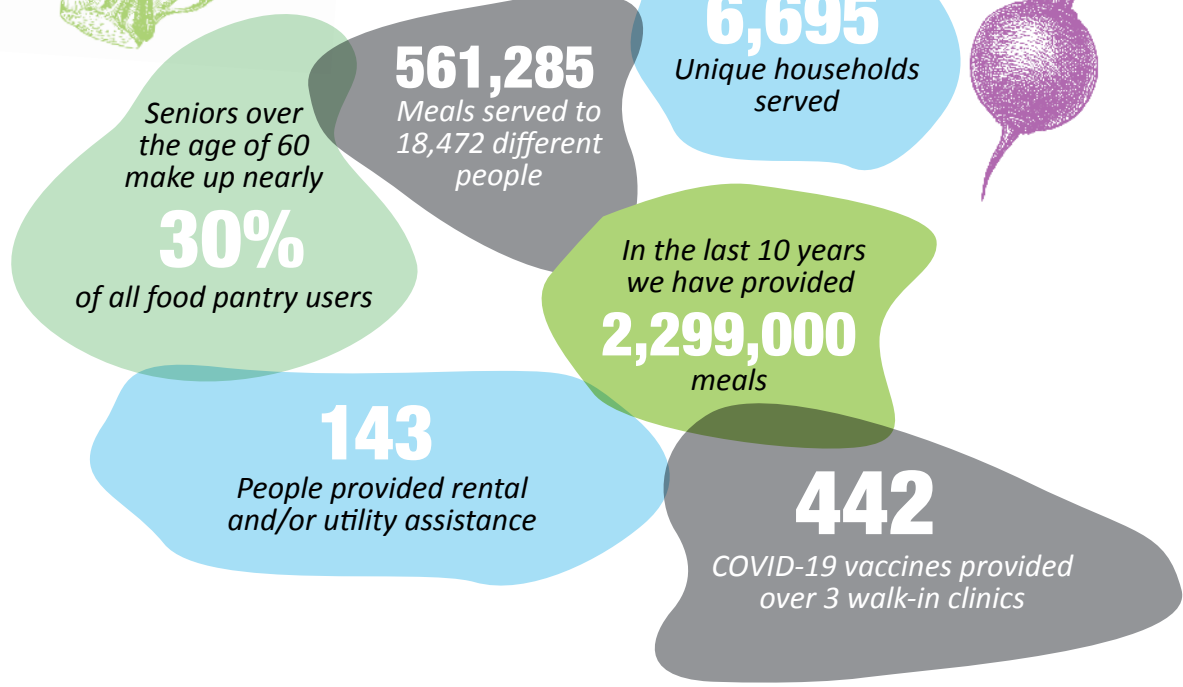
Serving 20,449 people in 2022!



Basic Needs

Food & Clothing Distribution

The **Food & Clothing Distribution** program provides a safety net for those in need through twice-monthly mass food distribution, daily emergency food bags, and clothing distribution. In the wake of the pandemic, this also includes assistance with vaccine access as well as rent and utility payments. Inflation resulted in more families feeling their budgets tighten and seeking help resulting in the busiest year yet for the food and clothing distribution program, with a growth of almost 20% over 2021's record year.



Linda's Story...

What happens when the caretaker needs to be taken care of? Linda is a caretaker. Not only does she care for her ailing brother, who is fully dependent on her, but she also takes care of her grandchildren and great-grandchildren! Her open-door policy for her family means that at times there are 14 people she needs to feed, and that is what brought her to May Dugan Center. Linda's fixed income, along with providing around-the-clock care for her brother, made making ends meet difficult. The food program helped stretched her dollars and case management services helped her sort through her brother's medical needs and the mountains of paperwork that came with those needs. With the support of her case manager, Linda was able to gain Power of Attorney for her brother, along with state-funded medical care and nursing support.

It felt like there was finally a light at the end of the tunnel. And then Linda was diagnosed with lung cancer. Through several rounds of chemotherapy and radiation, along with hospital stays and the loss of her beautiful long silver hair, Linda continued to be the sole provider for her family. Linda is the cornerstone of her family, never once saying "no" or "I Can't", that tenacity has helped her care for her family and herself! After two long years of treatment, we are thrilled to report that Linda is now in remission and able to participate in Seniors on the Move, taking advantage of monthly food deliveries for her household. Even caretakers need to be cared for, May Dugan Center is proud to have helped care for Linda.



Behavioral Health Services

3,490

Hours of individual counseling

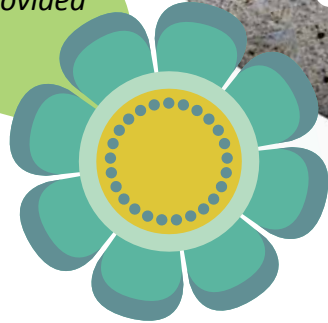
\$68,802

Of uncompensated treatment provided

2,032

Hours of group counseling

501
Clients served!



Felicia's Story...

Felicia came to BHS after receiving 16 weeks of trauma counseling from May Dugan Center's (MDC) Trauma Recovery Center. An immigrant with limited English proficiency, Felicia had experienced domestic violence at the hands of her American husband. The combination of cultural differences and limited English proficiency meant it was essential for the BHS team to adapt to meet her needs. In addition to ongoing counseling, the team connected Felicia with MDC's Educational Resource Center for English as a Second Language classes while her TRC advocate found legal services for immigration support. During this time her husband accused Felicia of abusing their children. MDC staff educated her on her rights, allowing her to advocate successfully for herself. She was reunited with her children. They are now in safe housing and Felicia has both a car and job. Felicia continues counseling with BHS and is working to save money for a visit to her mother overseas. Felicia is an example of MDC services coming together to support a client's diverse needs!

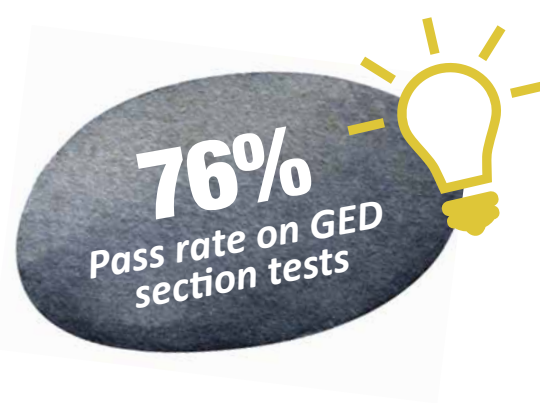
Behavioral Health Services (BHS) occur in-person, on-site, virtually over telehealth platforms, and/or in the community depending on the need of the client. Accreditation through the Commission on Accreditation of Rehabilitation Facilities (CARF) assures that programming is of the highest quality. Specialized services are available for individuals living with HIV, older adults, and members of the LGBTQ+ community.

Services include:

- **Individual Mental Health Counseling:** licensed social workers and counselors are trained in a variety of therapy techniques to support healing, including cognitive behavioral therapy, EMDR, Motivational Interviewing, art, and music therapy.
- **Case Management Services:** offered in both English and Spanish, helps clients find affordable housing and linkage to community services, with case managers navigating housing programs and community service providers.
- **Substance Use Disorder (SUD):** services address the debilitating results of addiction and its effects on the wellness of individuals, families, and the community. BHS provides easily accessible treatment to clients who face barriers to getting the help they need.
- **Intensive Outpatient Services:** groups designed to help clients learn skills to manage emotions and address concerns of emotional regulation while developing new and effective coping strategies.
- **Other group counseling services:** Illness Management and Recovery, aftercare, anger management, music therapy, and art therapy provide opportunities for clients to build resiliency, communicate effectively, and master skills for daily living.

Education Resource Center

The *Education Resource Center (ERC)* at *May Dugan Center* provides a full range of learning opportunities for all adult learners. These include: learning to read; learning English in ESOL classes; preparing for high-school equivalency exams including the GED; preparing for the US Citizenship exam; and career services including exploring career opportunities and help finding employment. In 2022, through the support of the *Local Initiative Support Corporation (LISC)*, the ERC opened its *Financial Opportunity Center® (FOC)*, which connects individuals and families with financial coaching, building savings, and understanding credit.



80

People received
workforce development
services

86%

Retention rate

181

Students enrolled
in the ERC

Diamond & Dominic's Story...

Diamond came to ERC through May Dugan Center's Trauma Recovery Center (TRC) after losing a family member to gun violence in the summer of 2020. With encouragement from her TRC therapist, Diamond began to explore GED preparation with the ERC's Director, Sarah Edelman. Sarah encouraged Diamond to find the right pace for her recovery and let her know when she was ready to tackle this next step. Diamond was determined to complete her GED journey in 2022. Diamond quickly moved from her initial assessment to GED-level work and a section test within weeks! One day in class, she casually mentioned her brother was also interested in earning the GED. MDC staff worked quickly to guide him through the intake, and it became a competition between brother and sister to see who could reach the GED first. In a race almost too close to call they earned their GED within one week of each other! Both continue their work in the ERC with workforce development. Dominic is looking for a career in manufacturing, and Diamond would like to become a licensed beautician. The trauma-informed care provided by the ERC continues to allow Diamond and Dominic to take the lead in their healing and education.

Trauma Recovery Center

The **Trauma Recovery Center** brings together law enforcement, hospitals, community agencies, and the *May Dugan Center* to provide immediate help and support to victims of violent crime. TRC services provide sixteen weeks of stabilization.

Services may include:

- Immediate safety assessments and support after incident
- Advocacy and case management
- Assistance with compensation applications
- Trauma therapy
- Support through the legal system
- Coordination of care with community support systems

36

On-scene crisis responses

121

Clients relocated permanently

2,600

Hours of trauma-counseling

412

Survivors received services

131

Emergency housing placements

6,240

Hours of advocacy and case management

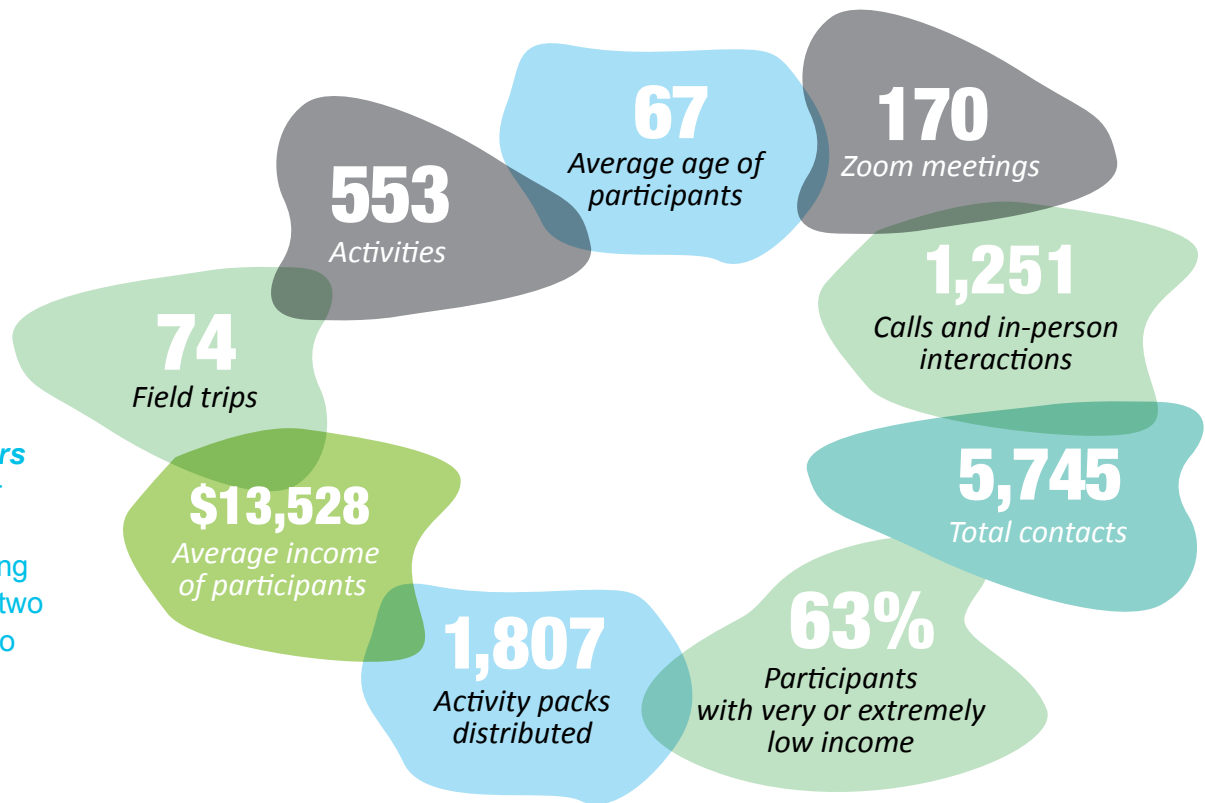


Angela's Story...

In the wake of the devastating loss of her son to gun violence, Angela spiraled into a deep depression, losing her livelihood and home in the process. Angela's physician referred her to the **Trauma Recovery Center (TRC)**, and she began to work through processing her trauma and grief. After a year of working with TRC staff as well as a counselor from MDC's Behavioral Health Services department, Angela was able to return to her job as a truck driver—expanding her business from one truck to four—and purchasing a new home. Before coming to the TRC, Angela did not want to live without her son. Today, she is able to honor her son's memory through a new lease on life.

Seniors on the Move

May Dugan Center provides the tools to help older adults stay active and engaged in their community through **Seniors on the Move**. The goal of the program is to empower older adults with the resources necessary to help better manage financial, physical, and emotional well-being while deepening social connections in order to support aging in place. After two years of virtual programming, SOTM was thrilled to return to in-person meetings in 2022!



Remembering Carmen...

Carmen Nieves-Rolon was a valued member of *May Dugan Center's Seniors on the Move (SOTM)* and a rock-steady presence at *May Dugan Center*, staffing the clothing room as a *Vantage Aging Trainee*. She had the uncanny ability to help everyone, sometimes before they even realized the help was necessary. To honor Carmen's memory and continue her legacy, Carmen's son, Sam, organized Carmen's Community Harvest Festival in October 2022, which SOTM participated in. Sam recalls, "May Dugan was a place where my mother could express her passion, her desire to help people. That was my mother. That is why she was at *May Dugan* because she wanted to see people happy. Whether it was housewares, clothes or food, my mom wanted to share what she had or could find for others. Regardless of the cost to her, she wanted to help. My mothers legacy is about service. And in service, she took care of people."



MomsFirst



The **MomsFirst** program at **May Dugan Center** works to break down barriers to healthy pregnancy and infancy. **MomsFirst** staff provides outreach, case management, health education, and depression screenings to teenage mothers through a unique partnership with the City of Cleveland Department of Public Health, the Cleveland Metropolitan School District, and Charter Schools within the City of Cleveland. **MomsFirst** also works with incarcerated, recently released, homeless, and unstably housed pregnant/parenting adult women. The goal for work with both populations of mothers is to reduce infant mortality and secure healthy birth outcomes.



227

Students participated in peer advisory programming

95

New pregnant teens and women enrolled in MomsFirst

23

Outreach & education events held

69

Healthy babies born to MomsFirst participants in 2022



Chantal's Story...

*Little Amari is a testament to a mother's love and determination. Chantal learned she was pregnant while she was serving an eight-month sentence for a parole violation and Amari was delivered while her mom was incarcerated. Chantal had what many other women participating in **MomsFirst** do not— the support of family. Amari went to live with family members for the next three months, and Chantal diligently pumped breastmilk for her. Pam, Chantal's **MomsFirst** Case Manager, picked up the breastmilk from the Cuyahoga County Jail and delivered it to Amari. Meanwhile, Chantal took advantage of all services offered at the jail and followed the rules in place. Upon her release, Chantal got a job and established a new home for her children. Chantal remained positive no matter what adversity she faced and continued to receive support from Pam and **MomsFirst**. In July of 2022, the family welcomed baby Camani making Amari a very proud big sister. There is nothing a little support, and a whole lot of a mother's love, cannot overcome.*

2022 Special Events



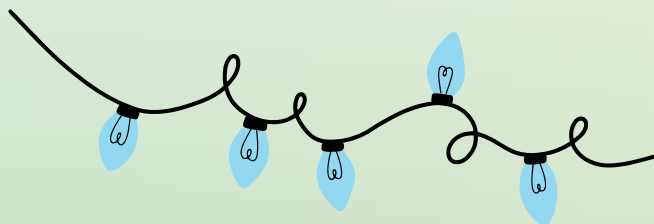
Irish Roots

May Dugan Center returned to the Music Box Supper Club to celebrate its 7th annual Irish Roots! Nearly 300 people came together to support the mission of *May Dugan Center*— and have a good time! Generous support from the community was evident in the donation of 22 raffle baskets and 7 silent auction items. 80's Alternative kept the dance floor hopping with their collection of 80's classics and Emcee Peacock dazzled the crowd with his attire. The evening was full of fun, laughter, and generosity with over \$30,000 raised for *May Dugan Center*.

Tree Lighting

May Dugan Center celebrated its 13th annual Tree Lighting Ceremony on December 1st. Neighbors from near and far came to Bridge Avenue to hear the special performance by the *Seniors on the Move Rhythm and Roots* group and the *Urban Community School Choir*. The night was chilly but paired with the hot cocoa bar made for a festive atmosphere. Santa Claus himself lit the 45-foot tree that has continued to be a beacon through the Ohio City Holiday season.

Save the Dates 2023



Summer Soiree
JUNE 2ND, 2023

At Windows on the River

14th Annual Tree Lighting
NOVEMBER 30TH, 2023

At May Dugan Center

Tree Lighting Sponsors

Garland

Berkshire Hathaway Home Services Professional Realty
Hyland
AmeriHealth Caritas of Ohio
Garland Homes
Sandy Plumbing & Sons
Ohio Savings Bank
Ted & Co. Realtors at Howard Hanna
Jeffrey Tennant + Bruce Smith
Tittle & Perlmutter
Tucker Ellis LLP
Darrell Young Enterprises

Ginger Bread

Dr. David Linz
OneDigital
Proforma
The Sherwin Williams Co.
Angela Vannucci + Justin Ray
Rick Weigle + Key Private Bank
Zimmerman + Co. CPAs

Candy Cane

Gretchen Anderson + Brian Adams
Jukebox
Rick Kemm
Dr. Pamela Li
Progressive Urban Real Estate
Randall/Whitman/John/Woodbine Block Club
The Yandura Family



2022 Financial Statements

STATEMENT OF ACTIVITIES

Revenue & Support

Government grants	\$ 1,545,696
In-kind donations	1,933,863
Foundation grants	465,502
Capital campaign revenue	1,408,338
Gain on building acquisition	540,000
Mental Health consulting services	406,351
Rental income	132,993
Personal, corporate & civic contributions	231,256
Special event & miscellaneous	69,939
United Way	211,686
Investment income & net gains	-186,046

Total Revenue & Support \$ 6,759,578

Expenses

Salaries & fringes	\$ 2,462,002
Program supplies	2,800,845
Donated rent	48,158
Utilities, bldg & equipment expenses	130,212
Professional fees	235,869
Insurance	34,617
Office expenses	65,645
Interest expense	29,261
Depreciation	23,426
Other	130,816

Total Expenses \$ 5,960,851

Revenue over expenses-Unrestricted	\$ 798,727
Surplus from Restricted Activities	460,933

Net Surplus \$ 1,259,660

STATEMENT OF FINANCIAL POSITION

Assets

Cash & cash equivalents	\$ 4,923,541
Accounts receivable	1,073,604
Other current assets	60,981

Long Term Assets

Investments	\$ 1,061,915
Accounts receivable greater than one year	1,282,257
Loan Receivable-NMTC	\$ 3,479,000
Property & equipment, net	2,320,347

Total Assets \$14,201,645

Liabilities

Accounts payable & other current liabilities	\$ 870,248
Accrued expenses	179,803
Loans payable-NMTC & other	5,738,638

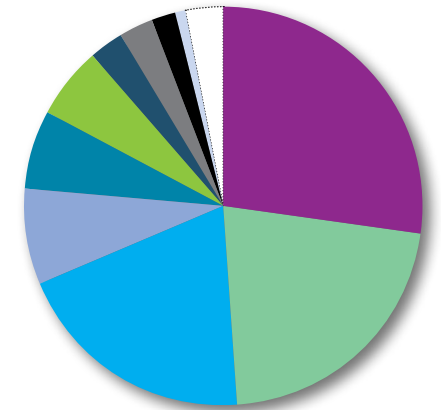
Total Liabilities \$ 6,788,689

Net Assets

Net Assets without Donor Restrictions	\$ 4,402,390
Net Assets with Donor Restrictions	3,010,566

Total Net Assets \$ 7,412,956

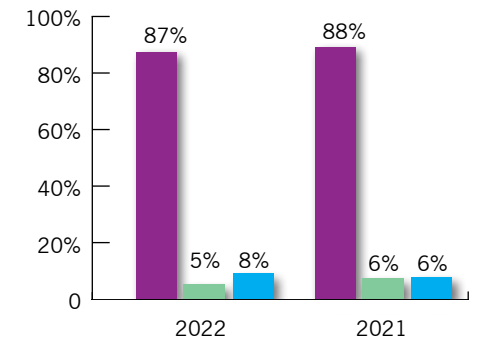
Total Liabilities & Net Assets \$14,201,645



OPERATING REVENUE

29%	In-kind donations
23%	Government grants
21%	Capital campaign
8%	Gain on building acquisition
7%	Foundation grants
6%	Mental health counseling
3%	Personal, corporate, civic contributions
3%	Federated Funders
2%	Rental income
1%	Special events & other
-3%	Investment income

OPERATING EXPENSES



Programs
Management & General
Development

Audited financial statements include multi-year grants and capital campaign contributions.



Rock Solid Support!

May Dugan Center began its operations in 1969 because of the commitment of concerned community members. Today's growth is possible because of the support of local foundations, government funding, businesses, and individuals who care about their neighbors in need. Thank you for your continued "Rock Solid Support!"



INDIVIDUAL DONORS

\$20,000 & Up

THE J. HARRINGTON & MARIE E. GLIDDEN FOUNDATION *(On Behalf of the Cleary Family)*

\$10,000 & Up

ANONYMOUS
LAKESIDE FOUNDATION
KAREN PIANKA
(In memory of Judge Raymond Pianka)

\$5,000 & Up

ANONYMOUS
CAROL & CHARLES A. RINI FOUNDATION
MICHELLE & CHUCK RINI
MARGARET WEEKLEY

\$1,000 – \$4,999

ANONYMOUS
CYNTHIA & MARK BACON
JOANIE BELAIR
CAROL BURKHOLDER
SARAH & KRIS CICCARELLO
SUZANNE & RICHARD COOPER
SANDI & MARVIN COX
ROBIN DAVENPORT & SCOTT FRANCIS
KAREN DESOTELL & MIKE CUSHLER
KATHLEEN & JOHN EYERMAN
CARLI & CHRIS FAYKUS
MATT & BETH GARLAND
KIM HEINEN
BETTY & HENRY JACQUES *(In memory of son, David)*
ALEXA MARINOS
LUCY MARTINEZ
TOMMY MARZELLA & MAX ESTRIN
ARTHUR B. MCBRIDE, SR. FAMILY FOUNDATION
PAUL NEUNDORFER
JULIE REHM & BRUCE SZABO
SHARRI ROPER & DAVID COMERNISKY
PETE SNAVELY, JR.
GRETCHEN SNEDIKER & SCOTT JACKSON
KIM & RICK SOUKUP
DARLENE & LARRY SORRELS

JEFFREY TENNANT & BRUCE SMITH
ANNETTE & PATRICK STEVENSON
RUSSELL TRUSSO *(In honor of Andy Trares)*
UVAS FOUNDATION
ANGELA VANNUCCI & JUSTIN RAY
CONNIE & DOMINIC VANNUCCI
LINDA & CHRISTOPHER WARREN
RICK WEIGLE
GENNY ZARNICK & ZARNICK FAMILY FOUNDATION

\$500 – \$999

LOREN ANTHES
NUNZIO BOSCARIELLO
JOHN CORLETT & DOUG VAN AUKEN
BRIDGET & JEFF CONCEPCION
LAUREL DOMANSKI DIAZ
DIANE FEDAK & TOM BUFORD
(In memory of Eileen McGann)
IRVING & GLORIA FINE FOUNDATION
NANCY FISHER ALLISON *(In honor of Avanti Adhia & Avi Allison & Vanessa Jackson)*
STEVE HURSHMAN
JAN KUCKLICK *(In memory of Brent Russell Kucklick)*
CYNTHIA KUEHN *(In memory of Richard A. Kuehn)*
RICHARD LEVICH & CANDACE CHASE
(In honor of Patty Kaplan)
MARY LOU MADERKA
MARTHA & PATRICK MCGRAW
MARY & BRIAN MCGRAW
DAWNA MCINTYRE
KIM & FRANK MOREL
NANCY & MIKE MOREL
ANITA MYERS & GLENN JARED VAN WAGENEN
MAUREEN NAKONEK
NETWORK FOR GOOD
PATRICIA & CHARLES NOCK
BONNIE & STEVE O'BRYAN
SARA & HUNTER PECKHAM
SANDRA & PATRICK REYNOLDS
PRISCILA ROCHA
THE GIVING BASKET
SUE & CRAIG TRARES

\$250 – \$499

GRETCHEN ANDERSON & BRIAN ADAMS
JESSI & PAOLO APPELY
DEB BECKWITH
LAURA & FRED BIDWELL
TODD BURGER
BETH CARTER *(In honor of Vanessa Jackson)*
PAMELA CHARLTON
MARSHA COFFMAN
MARY COMPTON
CHERYL DAVIS
STEPHANIE ENGLISH
TOMMY HASSON
KELSEY HEINEN
LYNN HEISLER
MARCIA KARCHMER
DEBBIE & SEAN KILBANE
(In memory of Edward & Angela Kilbane)
COLLEEN KING
MICHELLE & DR. JON LEIZMAN
DR. PAMELA LI
DIANA & WAYNE LINGAFELTER
(In honor of Karen Ross)
LIBBY & TOM MCGRAW
AMY & DAN MCKENNA
LEON MEGRI
BILL MERRIMAN
SOPHIE METTIER-GROVE
JONATHAN PHILIPP
CARLY PULLAR
MARIAN & KEVIN REYNOLDS
SUSAN & BOB ROTATORI
LISA SIMO
KENNETH TAYLOR
PHIL VEDDA
EILEEN WALLENHORST

\$100 – \$249

JANET ALLT
TERESA ANDREAU
MEGAN BARK
NANCY & DR. JAMES BEKENY
RORY BELLAMY

VIRGINIA BENJAMIN
KATHRYN BEHM
KATHLEEN BRAMMER
CURTIS BROSKY
MARY & DAVID BULLEN
PATRICIA & MATTHEW CONKLIN
PAT DAW *(In honor of Brian Daw)*
LAURA DEANGELO
DIANE DEMELO
THERESE & JIM DRAKE
WILLIAM GAZLEY
EILEEN & BARRY GORDON
(In memory of Edward & Angela Kilbane)
SANDY GREEN
CHRIS HALAPY
TERRY HAMOVITCH
ALLEN HARRIS
ANNE HEARTH *(In memory of Brent Russell Kucklick)*
M.J. HEJRA
SHARON & DAN HERMOSILLO
MARY HROMYKO
NORA HUGHES
VALERIE HUGHES
WENDY & KEN JACQUES
JEANNE JENKS
LINDA & ED KENNEDY
NATALIE LEEK
MARY CAYE KILBANE *(In memory of Peter G. Kilbane)*
VIRGINIA & EDWARD KILBANE
(In memory of Edward & Angela Kilbane)
CHARLES KLOPP *(In memory of Claudia Klopp)*
CHAD KUBIK
JENNIFER LASKY
INDIA LEE PIERCE
CHARLES LITTEN
LEAH LIVERMORE
DAN MACKIN
PHYLLIS MAGOLD
(In honor of Elizabeth Pecha Masterson, Lourdes Academy 1968)
HAKMAT MANAA
MOHAMED MANAA

RAYMOND MCGANN
 SUSAN MCKEAN *(In honor of Angela Vannucci)*
 ANDREW MEEK
 CHARLES MESROBIAN
(In memory of Richard Mesrobian)
 CLAIRE MIHALEK
 ANNETTE & KEN MILLISOR
 MARGARET MURRAY
(In honor of Lourdes Academy 1968)
 CHERYL & JOHN NEFOROS
 CAROL & DON NORMAN
 MEGAN NOTARBERADINO *(In honor of John Lydon)*
 MARY ROSE OAKAR
 STEPHEN O'BLOCK
 GARY OCHI
 GARY OGROCKI
 CHANTELLE O'KELLY
 LORI OLSZEWSKI
 KATHY PANIK
 BARBARA & DAVID PARTINGTON
 RICARDO PINEIROS
 ROBERT PRENDES
 JEFF RAMSEY
 JOHN REGAL
 KATHY & RICH REPENNING
 ANGELA & JOSEPH ROSHETKO
 KAREN ROSS
 BRENDA & DR. MIKE SARIDAKIS
 RICHARD SCHESKE, JR.
 PAUL SMALDONE
 PATRICIA & EDWARD SOUTHWORTH
 ADAM STALDER & JEFFREY HUNTER
 ROBERTA TALIAFERRO
 EMILY & LAKSHMAN TAVAG
 MICHAEL THOMAS
 MARY ANN VISDOS
 MARY WARREN
 MOLLY WEAVER
 MARY WEHRLE
 JULIE & ED WISNESKI
 AMANDA YOHO
 JIMMY ZADD
\$1 – \$99
 FRED ANTONUCCI
 BRIAN ASQUITH
 KATIE BEACHLER

NICOLLE BELLMORE PIERSE
 JACK BIALOSKY
 BARB BELOVICH & JACOB KRONENBERG
 MADELINE BEUS
 ALLEN BINSTOCK
 JIM BLACK
 JEFFREY BOLT
 JESSICA BOURN
 CAROL BRADNAN
 CHERYL BRISTOL
 MARY BROWN
 THADDEUS BROWN
 EMILY BUNCH
 RUTH BUTTS
 KELSEY CLOUD
 DICK CLOUGH
 BELINDA COX
 NANCY CROFT
 CARLA CUFFEE *(In honor of Vanessa Jackson)*
 JENNIFER DARLING
 DAWN DAWSON
 CAROL & JIM DAYTON
 SARAH EDELMAN
 TIFFANY EVANS
 CRYSTAL FARMER
 BROOKE FIGER
 ALAN FODOR
 MICHELLE FOOTE
 JANET FOWLER
 HEIDI FRAVEL
 MARIA FUQUA
 SHARON GANELLI
 JANICE GANNON *(In memory of James Gannon)*
 BOBBI GARVEY
 ANN GILBERT
 KATHLEEN & DAVID GILRONAN
 CRISAUNDRA GRAYS
 BRETANY GREY
 DEBORAH HALLE
 MOHABATHULLAH HAMEED
 JOEL HAMMOND
 MAUREEN & JOHN HARTIN
(In memory of Bill Cusick)
 KIMBERLIN HILL
 TERESA HILL
 DAVID HORNEK

STEPHANIE MORRISON HRBEK
 ANDREW HUFFMAN
 VANESSA JACKSON
(In honor of Seniors on the Move)
 JULIE JACONO
 CHRISTINE JASKO
 DEBRA JESIONOWSKI
 GERRI & JEFF JOECKEN
 SANAA JULIEN
 DIANNA KALL
 CAROLE & JOHN KEALY
 CHARLES KELLY
 ROBERT KENNEDY
 MARIE KLEIN
 TONI & ED KNOTEK
 IRANDEEP KOUR
 SARAH KROUS
 SUE KUCKLICK
 REBECCA LAMB
 IRENE LANESE
 SO LANG
 SANDRA LAURENTY
 SHANNON LEAHY
 DONNA LEARY
 SHALEY LINTNER
 DARLENE LUGO
 ANGELA LOWDER
 GEOGES MALLINOS
 KUMAR MANOHARAN
 RANIA MANSOUR
 MADALYNN MARINKOV
 DENISE MATWIJIW
 JAMES MCCRICKARD
 MATTHEW MCKELVEY
 CHRISTINA MCLOUGHLIN
 KATHY & BOB MCNUTT
 ROBERTA MIHALEK
 SUE MILLER
 MARIA MINTALUCCI
 ADAM MORGAN
 PETER MORRISON
 LOUISE MURPHY
 JEFF MYERS
 HELEN & CARL NAPOLI
 MICHAEL NATRAN
 KOFI NEIZER-ASHUN
 LYDIA NOSSAMAN
 DIANE & JIM NOVAK
 CORTNEY NUNN
 BRIDGET O'CALLAHAN
 CAROL OPPERMAN
 BARB ORLOWSKI
 ROBIN ORLOWSKI
 THERESA OSWALD
 APRIL PALIDAR
 GINNY PAVEY *(In honor of Vanessa Jackson)*
 DANIEL PETRICIG
 SUSAN PEYTON
 CHRISTINE PIATAK
 VICTORIA & JOHN POLITO
(In memory of Anthony Polito)
 MATT POKRANDT

JENNIFER & DONALD POLLACK
 CAROLE & JACK POMPEI
 EMILY & CHRISTIAN POPPERT
 JESSICA RANALLO
 REGINA RANDAR
 SURIYA RAVICHANDRAN
 LORRIE RAY
 AMBER RECHNER
 BRIGID REYNOLDS
 LESLIE RODRIGUEZ
 ROSA ROGERS
 CARMEN ROSCOE
 VICTORIA ROSSMANN
 DAVID SANFORD
 SUZANNE & KENNETH SCHNEIDER
 COLIN SCHROEDER
 ERICA SIERRA
 CHRISTINE SMILE
 HALLE SNAVELY
 GARY SOSIAS
 DEANNA STUMPF
 DOROTHY SURI
 MARY ELLEN & DAVE SZAMBORSKI
 SARAH TABELING
 ALISON THEURER
 BRANDON THOMAS
 COLLEEN TRAUD
 DANNY TREICHEL
 NICOLE TROMBETTA
 ERIN URIG
 WENDY VADINI *(In memory of June Kadlec)*
 JEFF VERSTEEG
 LYNNE VITI *(In honor of Vanessa Jackson)*
 JACLYN VOLCANSEK
 JANET WALKUSKI
 MARGHERITA WARE
 DEBORAH WEBB
 SHELLEY WERNHOLM
 JARED WRIGHT
 JOSHUA WOMACK *(In honor of Angela Vannucci)*
 CHRISTINE ZAUGG *(In honor of Alexa Marinos)*

CORPORATE/CIVIC/FAITH-BASED

AMAZON SMILE
 ANDREWS OSBORNE ACADEMY
 AMERIHEALTH CARITAS OHIO
 BENEVITY
 BERKSHIRE HATHAWAY REALTY
 BIGMOUTH DONUT CO.
 BLACKBAUD
 BLUE POINT CAPITAL
 CENTER FOR COMMUNITY SOLUTIONS
 CHARITYVEST INC.
 CHOO LAH-OHIO CITY
 CLE FEDERAL EXECUTIVE BOARD
 CUYAHOGA LAND BANK CHARITIES
 DON MCNEA FIRE SCHOOL INC.
 EATON CORPORATION
 GARLAND HOMES
 GIE MEDIA



HEINEN'S FINE FOODS
 HERB GUILD GARDEN CLUB
 HOME DEPOT
 HUNTINGTON CONVENTION CENTER
 OF CLEVELAND
 HYLAND SOFTWARE
 JOHN ROGERS ELEMENTARY SCHOOL
 JUKEBOX
 KEYBANK
 KEY PRIVATE BANK
 LUTHERAN HOSPITAL CLEVELAND CLINIC
 MAROUS BROTHERS CONSTRUCTION
 MEDICAL MUTUAL OF OHIO
 MOEN
 MICROSOFT
 NETWORK FOR GOOD
 NORDSON CORP.
 NORTH COAST EVENT SERVICES
 OHIO SAVINGS BANK-NYCB
 ONE DIGITAL
 PADUA FRANCISCAN HIGH SCHOOL
 PROFORMA
 PROGRESSIVE URBAN PROPERTY MGT.
 QUICKEN LOAN COMMUNITY FUND
 RDF TRUCKING ENTERPRISES
 ROCK FAMILY COMPANIES
 ROCKY RIVER UNITED METHODIST CHURCH
 ST. MARK CHURCH
 SANDY PLUMBING & SONS
 SHOOK CONSTRUCTION
 TED & CO. REALTORS @ HOWARD HANNA
 THE DAYTON FOUNDATION
 THE HARP
 THE SHERWIN-WILLIAMS COMPANY
 TATMAN & ASSOCIATES
 TITTLE & PERLMUTTER
 TUCKER ELLIS, LLP
 WESTON HURD LLP
 YOUR CAUSE CORP
 DARRELL YOUNG ENTERPRISES.
 WESTLAKE SCHOOLS PTA
 WORD GROUP-CLEVELAND
 ZIMMERMAN & CO, CPAS

GINN FAMILY FUND
 LOCAL INITIATIVES SUPPORT CORPORATION,
 CLEVELAND
 MEDICAL MUTUAL FOUNDATION
 OHIO DEPARTMENT OF HEALTH
 PARKER HANNIFIN FOUNDATION
 PNC FOUNDATION
 REUTER FOUNDATION
 RIDGECLEFF FOUNDATION
 THATCHER FAMILY FUND
 THE BRUENING FOUNDATION
 THE GEORGE GUND FOUNDATION
 THE MCGREGOR FOUNDATION
 THE MURPHY FAMILY FOUNDATION
 THE REUTER FOUNDATION
 THE SAM J. FRANKINO FOUNDATION
 THE SHOOK FOUNDATION
 THE THOMAS C. & SANDRA S. SULLIVAN
 FOUNDATION
 THREE ARCHES FOUNDATION
 THOMAS H. WHITE FOUNDATION
 UNITED WAY OF GREATER CLEVELAND
 UNITED WAY OF SOUTHWESTERN PENNSYLVANIA
 WOODRUFF FOUNDATION

GOVERNMENT SUPPORT

ATTORNEY GENERAL OF OHIO VOCA
 ALCOHOL, DRUG ADDICTION &
 MENTAL HEALTH SERVICES (ADAMHS)
 BOARD OF CUYAHOGA COUNTY
 CITY OF CLEVELAND DEPARTMENT OF
 COMMUNITY DEVELOPMENT
 CITY OF CLEVELAND DEPARTMENT OF
 PUBLIC HEALTH
 COVID-19 RAPID RESPONSE FUND-
 PHASE II VACCINE
 CUYAHOGA ARTS AND CULTURE
 CUYAHOGA COUNTY BOARD OF HEALTH
 CUYAHOGA COUNTY COMMUNITY
 SOCIAL SERVICES PROGRAM
 HRSA PROVIDER RELIEF FUNDING PHASE 4
 OHIO DEPARTMENT OF HEALTH
 STEP FORWARD

FOUNDATIONS/PUBLIC/ CORPORATE/FEDERATED FUNDING

ABINGTON FOUNDATION
 COMMUNITY SHARES
 COMMUNITY WEST FOUNDATION
 CUYAHOGA ARTS & CULTURE
 DEACONESS COMMUNITY FOUNDATION
 DOLLAR GENERAL FOUNDATION
 CYRUS EATON FOUNDATION
 FIRST ENERGY FOUNDATION
 FLORENCE CRITTENTON SERVICES FUND
 FOWLER FAMILY FOUNDATION
 FUNDERS COLLABORATIVE ON COVID-19 RECOVERY
 GIANT EAGLE FOUNDATION



VOLUNTEERS

JONATHAN ALLEN
 ELISHA ANDERSON
 LOREN ANTHES
 PAOLO APPELY
 KEVIN ASBERRY
 JOE BACSKAY
 JOANIE BELAIR
 WENDY BELTER
 GIGI BENJAMIN
 DONNA BENNETT
 JAYE BERGES
 RUBEE BERGES
 CAROLYN BENTLEY
 STEVE BOBAC
 JOHN BORSI
 RENEE BOWLES
 DESHAWN BOYD
 MIKE BRESNAHSN
 ABBY BRIGHT
 STEVE BRINCKA
 BRANDON BROWN
 YVONNE BRUCE
 LYNNE BUCK
 MARY BUGG
 EMILY BUNCH
 ROBERT & BRENDA BUTTS
 MARIA CALDWELL NOSSE
 ERIC CARABALLO
 COURTNEY CALVILLO
 MICHELLE CANDELARIO
 ALLIE CARR
 JUSTIN CARSON
 PAMELA CASHMAN
 PAM CHARLTON
 PATRICIA CHMURA
 CHRISTY CORFIAS
 CHRISTOPHER DICOLA
 DANIELLE DOZA
 MEG CHAPMAN
 COLBY CLARK
 CLEVELAND CAVALIERS
 TRISHA COSME
 ERIN DAVIS
 DELVE UNDERGROUND
 KAREN DESOTELL & MIKE
 CUSHLER

LAUREL DOMANSKI DIAZ
 SHANNON DOWNS
 MARGARET DUGAN
 LAURA DUNN
 JIM EDWARDS
 AMON ELLIOT
 ETHAN FITTRO
 GALE FLUKER
 CELINES FONTANEZ
 PAMELA FORD
 JANET FOWLER
 ADOLFO FRANCO
 MACON FURYES
 SHELBY GERL
 BRUCE GERTHING
 GIE MEDIA
 SARAH GILBERT
 JOE GILBERT
 ANDREA GIFFIN
 CHRIS HALAPY
 KYLE HANCHARICK
 KIMBERLY HEINEN
 LYNN HEISLER
 JULIE HERRMANN
 MAX HERZOG
 MICHAEL HILL
 ASHLEY HINES
 BRENDAN HOGAN
 LYDIA HORNER
 MARY HROMYKO
 ISAAC HUNT
 AWADA HUSSEIN
 HYLAND
 MARK JACKSON
 SCOTT JACKSON
 SHARON JASKOLKA
 KEVIN JOHNS
 TRICIA KACHMYERS
 PAUL KAPCZUK
 BONNIE KAZNOCH
 JUDGE KELLY KELLEY
 DESMOND KENNEDY
 SANDY KERRIGAN
 KEYBANK
 COLLEEN KING
 KATHLEEN & THOMAS KNITTEL

GIGI KUPER-LEWIS
 MIKE LANNOCCH
 KHAYLA LAW
 MJ LEMASTER
 KRISSEY LESKOVEC
 MELISSA LIAS
 MIGUEL LOPEZ
 LINDA & ERICK LUPSON
 LINDA MALIK
 JENNIFER MANGINO
 ALEXA MARINOS
 CATHY MARQUARDT
 ELISA MARRERO
 DOT MARTIN
 TOMMY MARZELLA
 SUMMER MAYHUGH
 BRIAWNA MAYS
 MANALISA MAZE WILLIAMSON
 MOLLY MCCANN
 TOM MCGRAW
 PHIL MCHUGH
 CHRISTINE MONTAGUE
 ERICA MORAN
 FRANK MOREL
 KIM MOREL
 ALEX AND JAMES MORGAN
 JAMES MORGAN
 FRED MOWERY
 MIKE MUSSON
 JULIE MUZYCZKA
 CATHY MYERS
 NEIGHBORHOOD FAMILY
 PRACTICE
 JILLIAN NEWTON
 MARCIA NOLAN
 NOTRE DAME COLLEGE
 NOVOGRADAC
 MARY ROSE OAKAR
 CHANTELE O'KELLY
 PAM ONACILA
 PAUL J. PAVLOVICH
 DANIEL PHAN
 DONNA PHELPS
 RYAN PHILE
 JONATHAN PHILIPP
 MICHELLE PHILIPPON

ELLIZABETH PIERSE
 HAILLEY PIERSE
 RICARDO PINEIROS
 ELAINE QUINLAN
 JEFFREY RAMSEY
 DEBORAH REED
 JULIE REHM
 NEAL REPKO
 CHUCK REYNOLDS
 PATRICK REYNOLDS
 PRISCILA ROCHA
 JULIANNE ROSEMAN
 KAREN ROSS
 BOB ROTATORI
 RPM INTERNATIONAL, INC.
 GREGG RZEWNICKI NIEMOJEW
 TALAR RZEWNICKI
 DAN SANDOVAL AND FAMILY
 PAMELA SCHMITZ
 SUSIE SCHNEIDER
 RYAN SCHUMACHER
 NANCY SCHUSTER
 HILLARY SIMS-PILETZ
 PETE SNAVELY JR.
 JUDY SOMOLES
 ANITA SPACEK
 ELENA STACHEW
 BRIAN STEFAN-SZITTAI
 ELAINE STEPHENS
 RHIANNON SWARTZ
 TRISH SWEENEY-MARTIN
 MANDI TALLION
 KATE TASEFF
 TED THEOPHYLACTOS
 THE MOREL FAMILY
 TITTLE & PERLMUTER
 DANNY TREICHEL
 SARAH TOIL
 RHODA TURK
 ANGELA VANNUCCI
 VICKY VARGO
 SARAH VON ALT
 JANET WALKUSKI
 NORA WALSH
 WILLIAM WALTERS
 ANGELA WANHAINEN
 MARY ANN WAYNE
 MOLLY WEAVER
 RICK WEIGLE
 HUNTER WELCH
 JOELLE WHITED
 KRIS WIDENHOFER
 NICOLA WILHELM
 BROOKE WILLIS
 MEGAN WILSON
 AMANDA YOHO
 VICTOR & KRISTY YOUNGER
 ASHLEY ZABISH
 MELANIE ZARNOSKI

IN KIND GIFTS

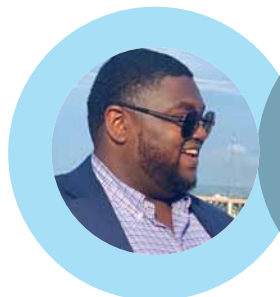
AMANDA STEARNS
 ANGELA VANNUCCI & JUSTIN RAY
 BETTY & HENRY JACQUES
 BRUCE SZABO JULIE REHM
 CAROLYN BENDER
 CAROLYN BENTLEY
 CATHY FARRELL
 CHERYL BRISTOL
 CINTHEA FIELDS
 CLAIRE MIHALEK
 DEIDRE DONNELLY
 DONNA SINNEMA
 DORIS SCOTT
 FIA CLEVELAND
 GRETCHEN ANDERSON & BRYAN ADAMS
 HUNTINGTON CONVENTION CENTER
 IRENE YARES
 JAMES BARNWELL
 JANE SIMERI
 JENNIFER MIHALEK
 JILL MORRIS
 JOANN MORGAN
 KAREN RAKE
 KATHLEEN WEISS
 KELLI HERRICK
 LARRY NORTON
 LINDSEY WATLING
 LISA BROLUND
 LOURDES ACADEMY ALUMNA
 LUCY LINARES
 MARCUS LEMONIS
 MARCIA FAZEKAS
 MARIE SU
 MARK WILLIAMS & JOE CASTELLANO
 MIRANDA HANNAH
 PATRICK & SANDRA REYNOLDS
 PEGGY KEATING
 PHIL WOODCOCK
 PINS & NEEDLES, JAN BROSTEK
 RICK KEMM
 ROCKY RIVER UNITED METHODIST CHURCH
 SAMANTHA BROWN
 SANDI COX AND FRIENDS
 ST. MARK CHURCH
 TINA CHAMOUN
 TOMMY MARZELLA & MAX ESTRIN
 WILLIAM BRICKLES
 WORLD GROUP, CLEVELAND

2022 COLLABORATING PARTNERS

ADAMHS BOARD OF CUYAHOGA COUNTY
 AMERIHEALTH CARITAS
 ATTORNEY GENERAL OF OHIO
 B RILEY SOBER HOUSE
 BENJAMIN ROSE INSTITUTE ON AGING
 BIENVENIDOS A CLEVELAND
 BRIDGECLE
 CAMPUS DISTRICT COMMUNITY DEVELOPMENT CENTER
 CARESOURCE
 CASE WESTERN RESERVE UNIVERSITY, OFFICE OF
 INTERPERSONAL AND INTERDISCIPLINARY
 EDUCATION AND RESEARCH
 CATHOLIC CHARITIES
 CITY OF CLEVELAND OFFICE ON AGING
 CLEVELAND BOOK BANK
 CLEVELAND CLINIC
 CLEVELAND GOODS BANK
 CLEVELAND METROPOLITAN SCHOOL DISTRICT
 CLEVELAND MUNICIPAL COURT- PROBATION DEPARTMENT
 CLEVELAND DIVISION OF POLICE
 CLEVELAND POLICE FOUNDATION
 CLEVELAND PUBLIC LIBRARY
 CLEVELAND RAPE CRISIS CENTER
 CLEVELAND SEWS
 COGSWELL HALL
 COMMUNITY MEDICAL CENTER
 COSMIC BOBBINS
 COUNCIL ON OLDER PERSONS, CENTER FOR
 COMMUNITY SOLUTIONS
 CUYAHOGA COMMUNITY COLLEGE
 CUYAHOGA COUNTY DEPARTMENT OF SENIOR AND
 ADULT SERVICES
 CUYAHOGA COUNTY PROBATION OFFICE
 CUYAHOGA COUNTY PROSECUTORS OFFICE
 DEDICATED SENIOR MEDICAL CENTER
 DIGITAL EQUITY COALITION, SENIOR COMMITTEE
 EMERALD DEVELOPMENT & ECONOMIC NETWORK (EDEN)
 FAITHFUL PHOENIX TRANSPORTATION
 FIRST YEAR CLEVELAND
 FRONTLINE SERVICES
 FURNITURE BANK
 GOODS BANK NEO
 GREATER CLEVELAND FOOD BANK
 HELP ME GROW
 HUMAN TRAFFICKING LAW PROJECT AT
 CASE WESTERN RESERVE UNIVERSITY

HUNGER NETWORK OF GREATER CLEVELAND
 JOHN PEARSON, MUSIC THERAPIST
 JOSEPH HOME/MARY'S HOME
 JOURNEY CENTER FOR SAFETY AND HEALING
 LEAH WOLFE, RPH, BCOP, MTM, INDEPENDENT
 PHARMACY CONSULTANT
 LGBTQ+ CENTER
 LGBT COMMUNITY CENTER OF GREATER CLEVELAND
 LITERARY CLEVELAND
 LOCAL INITIATIVES SUPPORT CORPORATION (LISC)
 MAGNET CLEVELAND
 METROHEALTH
 METRO WEST COMMUNITY DEVELOPMENT ORGANIZATION
 MOLINA HEALTHCARE
 NARCOTICS ANONYMOUS
 NATIONAL ASSOCIATION OF TRAUMA RECOVERY CENTERS
 NEIGHBORHOOD FAMILY PRACTICE
 NORTHWEST NEIGHBORHOODS COMMUNITY
 DEVELOPMENT CORPORATION
 OAKSTREET HEALTH
 OFFICE OF INTERPROFESSIONAL AND INTERDISCIPLINARY
 EDUCATION AND RESEARCH- CWRU
 OHIO CITY INC.
 OHIO DOMESTIC VIOLENCE NETWORK
 OHIO SAVINGS BANK
 PARTNERSHIP FOR A SAFER CLEVELAND
 PROVIDENCE HOUSE INC.
 RECOVERY RESOURCES
 SIMPLY VIRTUAL
 SPANISH AMERICAN COMMITTEE
 STELLA MARIS
 STEP FORWARD
 ST. HERMAN HOUSE FOCUS CLEVELAND
 ST. VINCENT CHARITY MEDICAL CENTER
 THE HUMAN TRAFFICKING LAW PROJECT
 MILTON & CHARLOTTE KRAMER LAW CLINIC CENTER
 THE MUSIC SETTLEMENT
 TOWARDS EMPLOYMENT
 UNITED HEALTH CARE
 UNIVERSITY HOSPITALS
 URBAN LEAGUE OF CLEVELAND
 VANTAGE AGING
 THE WELSH ACADEMY AT SAINT IGNATIUS HIGH SCHOOL
 WEST SIDE CATHOLIC CENTER
 WILLOW ROOM

This listing includes donors whose contributions were received between January 1, 2022 and December 31, 2022. We apologize for any errors or omissions. Please contact the Development Department at May Dugan Center at 216-631-5800 with any corrections.





CAPITAL CAMPAIGN DONORS

\$750,000 – \$999,000

OHIO MENTAL HEALTH & ADDICTION SERVICES
CLEVELAND DEVELOPMENT ADVISORS

\$500,000

ELISABETH SEVERANCE PRENTISS FOUNDATION
CITY OF CLEVELAND COMMUNITY
DEVELOPMENT GRANT

\$400,000

GEORGE GUND FOUNDATION
JACK, JOSEPH, & MORTON MANDEL
FOUNDATION
THE CLEVELAND FOUNDATION

\$300,000 – \$399,000

CUYAHOGA COUNTY STATE OF OHIO

\$250,000

REINBERGER FOUNDATION
HIGLEY FUND OF THE CLEVELAND FOUNDATION

\$150,000 – \$200,000

BRUENING FOUNDATION
KEYBANK FOUNDATION

\$100,000

ABINGTON FOUNDATION
FINANCE FUND
JOANN & BOB GLICK
R. ERIC KENNEDY
WILLIAM BINGHAM FOUNDATION

\$50,000 – \$60,000

EATON CHARITABLE FUND
GREATER CLEVELAND FOOD BANK
JULIE REHM & BRUCE SZABO

\$20,000 – \$30,000

CONSTRUCTION EMPLOYEES ASSOCIATION
HENRY & BETTY JACQUES
KELVIN & ELEANOR SMITH FOUNDATION
THE LOUISE H. AND DAVID S. INGALLS
FOUNDATION, INC.
VICTORIA MATEO
MARIA NOSSE
PLATFORM BEERS
WOODRUFF FOUNDATION

\$10,000 – \$19,999

JAY BROWN
JOHN CORRIGAN
THE J. HARRINGTON & MARIE E. GLIDDEN
FOUNDATION *(On behalf of the Cleary Family)*
ALEXA MARINOS
DAVE NAGER
PETER SNAVELY
ANGELA VANNUCCI AND JUSTIN RAY
MARGARET WEEKLEY

\$5,000 – \$9,999

LAURA BIDWELL
PAMELA CHARLTON
CLEVELAND-CLIFFS FOUNDATION
VINCENZO COSTANZO
TONY COYNE
ROBIN DAVENPORT
CHRISTOPHER FOSTER
MAUREEN HARTIN
HEINEN'S FINE FOODS
KIM HEINEN
MARY HROMYKO
LUTHERAN HOSPITAL, CLEVELAND CLINIC
RICHARD NOSSE
PARKER HANNIFIN FOUNDATION
GINNY PETRIE
KEVIN REYNOLDS
PATRICK REYNOLDS

CHARLES RINI
SWAGELOK FOUNDATION
CAROL TALLER
JEFFREY TENNANT
TUCKER ELLIS LLP
RICK WEIGLE
DARRELL YOUNG

\$2,000 – \$4,999

PAOLO APPLEY
CATHERINE BIFULCO
SUZANNE COOPER
ENTERPRISE HOLDINGS FOUNDATION
KATHLEEN EYERMAN
CHRIS HALAPY
DAN KARCHMER
RICK KEMM
LINDA KIOUSIS
MATTHEW KOSARKO
TOMMY MARZELLA & MAX ESTRIN
KURT MCMAKEN
FRANK MOREL
OHIO SAVINGS BANK
EMILY POPPERT
JEFF RAMSEY
CHUCK RINI
MICHELLE RINI
KAREN ROSS
MARK ROSS
HILLARY SIMS-PILETZ
MATTHEW SMITH
KIM SOUKUP
BRUCE SZABO
PHILLIP TREM
ANDREA VANNUCCI
CONNIE VANNUCCI
EILEEN WALLENHORST
KATHRYN WISE
JIMMY ZADD

\$1,000 – \$1,999

NICOLLE BELLMORE PIERSE
STACY CADDEY
COMMUNITY WEST FOUNDATION
KAREN DESOTELL
LAUREL DOMANSKI DIAZ
ANNE MARIE FOTI
ANNA GREENFIELD
BENJAMIN HEMINGWAY
HYLAND
SCOTT JACKSON
MARK KIRCHNER
THEODORE KLIMCZAK
MATTHEW KOSARKO
TOM MCGRAW
ALEXANDRA MORGAN
MURPHY FAMILY FOUNDATION
MARY ROSE OAKAR

SARA PECKHAM
EMILY POPPERT
PROGRESSIVE INSURANCE
LAURA RUSHTON
NANCY SCHUSTER
SHERWIN-WILLIAMS FOUNDATION
GRETCHEN SNEDIKER
RICK SOUKUP
JOANN & ROGER SYNENBERG
ANDY TRARES
DANNY TREICHEL
K. SANDRA VANTA
LINDA WARREN
KARI ZIMMERMANN

\$1 – \$999

STEPHEN AGAR
CLARE ALLERSON
GRETCHEN ANDERSON
FRED ANTONUCCI
JOHN APPLEY
JASON BABINEC
EMILY BAKER
DEBORAH BECKWITH
JOANIE BELAIR
JENNA BERRIS
JACK BIALOSKY
ALLEN BINSTOCK
RODINA BIZRI BARYAK
B&P SPRING PRODUCTION CO.
MACKENZIE BROWN
JACKIE BRUNNER
KATHLEEN CAPRETTA
LINDSEY CARROLL
KRISTIN CASSIDY
SCOTT CHATHAM
LISA CODISPOTI
ANDREW COLEMAN



SHANNON COLEMAN
 BEVERLY CONNOR
 COLLEEN CONTI
 DANIELLE COWARD
 PATRICIA DAW
 FELICIA DENSMORE
 SHIRLEY DENSMORE
 NAN DERRICK
 DAVID DICKENSON
 HEATHER DRIGGS
 GLORIA DRUMMOND
 LAURIE DUFFY
 CARLI FAYKUS
 MARYELLEN FIALA
 NANCY FISHER-ALLISON
 GALE H. FLUKER
 ALAN FODOR
 ALAN FORMAN
 GRETA FOSTER
 ADOLFO FRANCO
 MIKE GAFFNEY
 WILLIAM GAZLEY
 ERIC GEARY
 JUDY GHAZOUL HILOW
 TERENCE GLIHA
 ANGELA L GOBER-WOODSON
 BARB GONDOSCH
 BARRY GORDON
 JOEL HAMMOND
 KATHIE HARDIN
 KELSEY HEINEN
 TOM HEINEN
 LYNN HEISLER

MARY L. HEJRA
 PETER HIRSHBERG
 DORIS HONSA
 BRIAN HORSBURGH
 MARY HROMYKO
 KEVIN, MERRILL, HENRY & JORDAN
 JACQUES
 NICOLE JANSEN
 GERRI JOECKEN
 ANGELINA JOHNSON
 J.W. DIDADO ELECTRIC, LLC
 DAVID KACHADOURIAN
 DENISE KADILAK
 JOE KANTOR
 PATTY KAPLAN
 DANIEL KARCHMER
 ELLEN KARCHMER
 MARCIA KARCHMER
 MARISA KASHINO
 DANIKA KAZMER
 BROOKE KELSEY
 NICK KELSEY
 KATHLEEN KEOUGH
 EDWARD KILBANE
 MARY CAYE KILBANE
 PATRICK KILBANE
 SEAN KILBANE
 MIKE KINDRAT
 DENISE KNECHT
 LISA KROEGER
 JOSH KRUSZYNSKI
 ANYA KULCSAR
 JULIE KURTOCK

LABELLA ASSOCIATES, D.P.C.
 STEPHEN LAFFOON
 REBECCA LAMB
 DAVID LANDEVER
 MARYBETH LASKEY
 LAUREN LASKO
 CASEY LEWIS
 LUCY LINARES
 KENNEDY LOCKHART
 SOPHIA LOIZOS
 GAIL LONG
 LOURDES ACADEMI ALUMNI
 JUDITH LOZADA
 KELLY LYTLE
 SUE MARASCO
 ANTONIA MARINUCCI
 ZANE MARONEY
 SALLY MATHEW
 SHEILA MATHEW
 LAUREN MATTHEWS
 PEGGY MAULER
 JAMES MCELWAIN
 MARTHA MCGRAW
 DAWNA M. MCINTYRE
 PATRICK MCINTYRE
 AMY MCKENNA
 KATHY MCNUTT
 PAUL MEEKER
 LEON MENGRI
 WHITNEY MERCER
 CHARLES MESROBIAN
 ROBERTA MICHALAK
 ANNETTE MILLISOR

MARIE MINTALUCCI
 CARLIE MOORE
 ERIN MORAN
 NANCY MOREL
 LAURA MORRISON
 MARY MUSSON
 MARCIA NOLAN
 NANCY OAKLEY
 BONNIE O'BRYAN
 GARY OCHI
 ERIN O'CONNELL
 CONSTANCE OFFER
 CAMERON ORLEAN
 APRIL PALMER
 CHRISTOPHER PANEK
 KIRSTEN PARK
 DAN PAWLOWSKI
 MATT POKRANDT
 ROBERT PRENDES
 JENNIFER PRUGH
 RICH REPENNING
 RALPH REYNOLDS
 RICKY RHODES
 NORMAN ROBBINS
 PRISCILA ROCHA
 SHARRI ROPER
 ANGELA ROSHETKO
 JOSEPH ROSHETKO
 STEWART RYAN
 BRIAN SAN FRANCISCO
 MEG SATTLER
 ADAM SAURWEIN
 JACKIE SAVOCA

REBECCA SCAGLIONE
 CHRISTINE SCHALMO
 CHARLES SCHAMALY
 MICHAEL SERING
 ARAYA SHEPHERD
 BOB SHORES
 CARLY SNAVELY
 DAVID SNYDER
 DARLENE SORRELS
 MITCHELL SOTKA
 DAVID STECKER
 KATHLEEN STECKY
 SHAPEARL STEWART
 MICHAEL STROHM
 ROBERTA TALIAFERRO
 JOSEPH TAN
 KATE TASEFF
 THE HARP
 KATREENA THOMAS
 BJOEM TOENNES
 ELIZABETH TRACKLER
 TINA TURCIE
 AMY VAUGHTERS
 VICTORIA USCHOLD
 JANET WALKUSKI
 ADAM WALLER
 MARGHERITA & NATHAN WARE
 MARY WARREN
 KRISTY YOCHUM
 ANDREA ZADD
 ROBERT P. ZICCARDI
VIDEO
 SCOTT FIELDS

This listing includes donors whose contributions and pledges were received between January 1, 2018 and March 31, 2023. We apologize for any errors or omissions. Please contact the Development Department at May Dugan Center at 216-631-5800 with any corrections.

May Dugan Center Ceremonial Groundbreaking

October 13, 2022 was a historic day for **May Dugan Center**. On that day, the ceremonial groundbreaking was held to begin construction on the building expansion and renovation. This day would not have been possible without the support of local foundations, companies, and individuals...all of whom believed in the mission of **May Dugan Center**. One stood out from the rest, however. Without Mary Rose Oakar, the **May Dugan Center** would not stand where it does today. Once a teacher at Lourdes Academy, Mary Rose championed the creation of a multi-service center on the west side of Cleveland. This multi-service center would become **May Dugan Center**. Over fifty years later, Mary Rose is still a champion for **May Dugan Center**, serving on the Capital Campaign Steering Committee, and proudly helping break the ground for construction.



MAY DUGAN CENTER CAPITAL CAMPAIGN STEERING COMMITTEE

Justin Carson, *Co-Chair, Entrepreneur*

Pete Snavelly Jr., *Co-Chair, Snavelly Group*

Mary Hromyko, *Progressive Urban Real Estate, Inc.*

Judge Kelly Kelley, *Cuyahoga County Court of Common Pleas*

Tommy Marzella, *The Trevor Project*

Frank Morel, *Next Generation Construction*

Mary Rose Oakar, *former US Congresswoman*

Jeffrey M. Ramsey, *IFF*

Julie Rehm, *CSU Foundation*

Patrick Reynolds, *Retired, Forest City*

Bob Rotatori, *Rotatori Consulting*

Nancy C. Schuster, *Esq., Schuster & Simmons Co, LPA*

Ted Theophylactos, *Ted & Co. Realty, Howard Hanna*

Angela Vannucci, *Eaton Corporation*

Rick A. Kemm, *Executive Director*

HONORARY MEMBERS

Yvonne Conwell, *Cuyahoga County Council District 7*

Blaine Griffin, *Cleveland City Council President*

Kerry McCormack, *Cleveland City Council Ward 3*

Jasmin Santana, *Cleveland City Council Ward 14*

Jenny Spencer, *Cleveland City Council Ward 15*

MAY DUGAN CENTER BOARD OF DIRECTORS / OFFICERS

Angela Vannucci, *President*

Alexa Marinou, *Vice President*

Pamela Charlton, *Secretary*

Rick Weigle, *Treasurer*

Loren Anthes

Paolo Appley

Brandon Brown

Laurel Domanski Diaz

Gale Fluker

Chris Halapy

Kimberly Heinen

Tommy Marzella

Tom McGraw

Frank Morel

Maria Caldwell Nosse, *CPA*

Chantelle O'Kelly

Jeffrey M. Ramsey

Ricardo Pineiros

Priscila Rocha

Karen Ross, *Esq.*

Hillary Sims-Piletz, *CPA*

EX-OFFICIO DIRECTORS

Patrick Reynolds

Bob Rotatori

Nancy C. Schuster, *Esq.*

MANAGEMENT STAFF

Rick A. Kemm, *MNO, Executive Director*

Andy Trares, *Deputy Director*

Janet M. Allt, *CPA, Finance Director*

Nicolle Bellmore Pierse, *MS, MSSA, LSW, Director of Development*

Sue Marasco, *Ph.D., Director of Programs & Evaluations, Director of Trauma Recovery Center*

Anne Spelic, *LISW-S, Director of Behavioral Health Services*

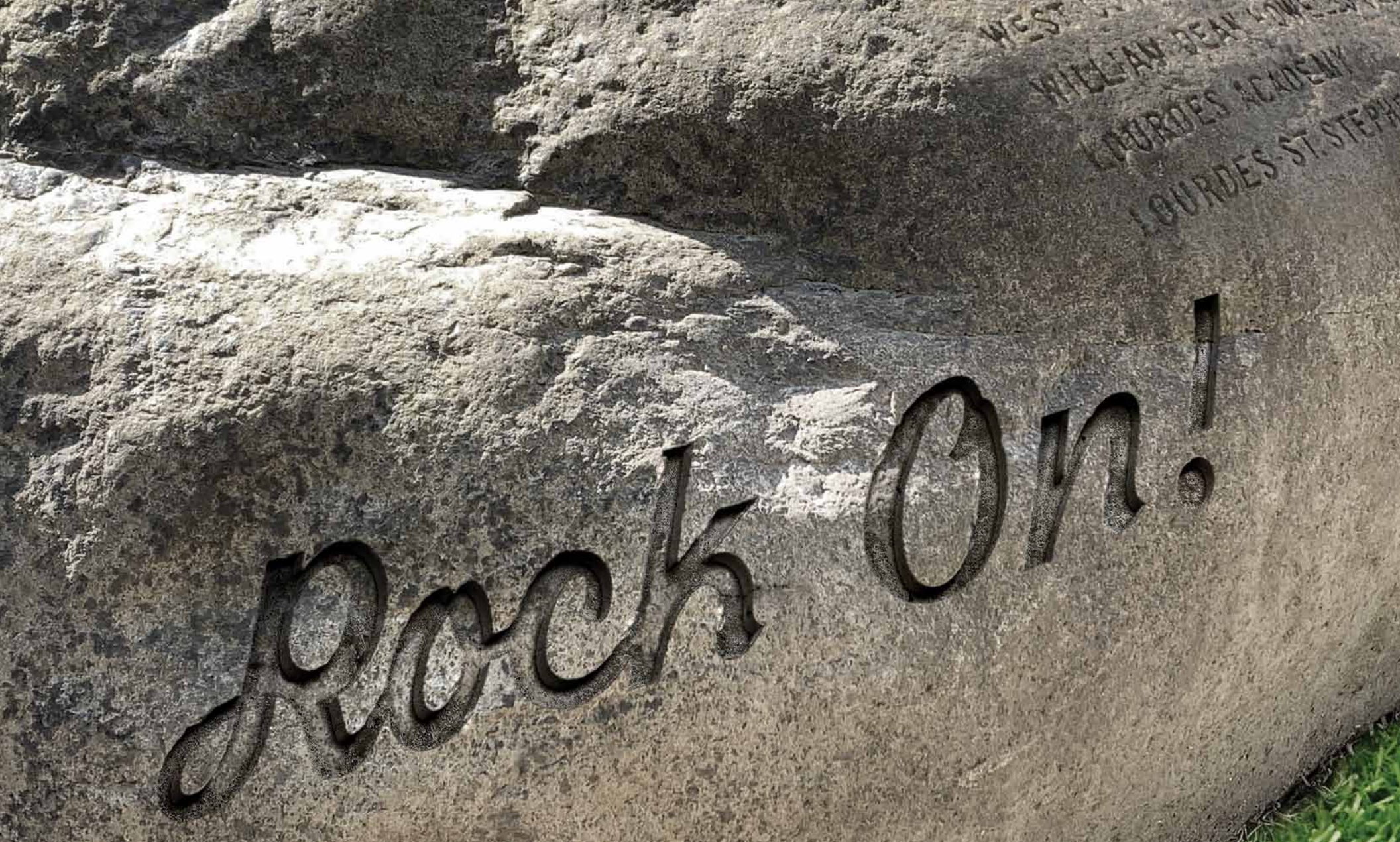
Sue Kuclick, *LPCC-S, Manager of Behavioral Health Services (8/15/2022)*

Sarah Edelman, *M.Ed, Director of Education Resource Center*

Angela Gober-Woodson, *MomsFirst Supervisor*

Vanessa Jackson, *Seniors on the Move Coordinator*

Darrylyn Lockhart, *LPCC, Director of Trauma Recovery Center (12/2022)*



4115 Bridge Avenue, Cleveland, OH 44113
(216) 631-5800 | www.maydugancenter.org



May Dugan
Center
Est. 1969